

*Final*

# UTAH NATIONAL GUARD PROJECT AREA PLAN

---

AUGUST 2024

## Introduction

The Military Installation Development Authority (“MIDA”) was created by the state Legislature in 2007 to facilitate the development of Military Land and private land for a military purpose in Utah. MIDA is working to assist the Utah National Guard (UTNG), a component of the U.S. Army and Air Force, charged with dual national and state armed forces missions that are dedicated to safeguarding lives, property, and freedom, to develop certain properties to enhance and increase the quality and capability of their operations in Utah.

These properties (“Project Area”) (with the exception of 1 federal property located on Camp Williams in Bluffdale - which is owned in part by the federal government and 2 properties owned by Tooele City Corporation) fall under the jurisdiction of UTNG and are owned and held in trust by the Utah State Armory Board. These properties, with the exception of the two parcels owned by Tooele City Corporation, are military properties. All 27 properties included in this Project Area Plan are tax exempt and have thus far generated \$0 dollars annually in tax revenues.

As part of the MIDA Act, at Utah Code Ann. § 63H-1-401, a necessary step in the process of assisting the development of the Project Area is the preparation of a draft Project Area Plan (“Draft Plan”). As required by law, at least 10 days’ notice was given of a public meeting of the MIDA Board to consider and discuss the Draft Plan. The plan was sent to every taxing entity located within the Project Area and every municipality located within one-half mile of any property within the Project Area.

The public meeting was a hybrid meeting (a combination of in-person and teleconferencing attendees) and took place on August 22, 2024, at 9:00 am. A recording of the meeting is available on <https://www.utah.gov/pmn/>.

## Definitions

The definition of terms used in this Project Area Plan are the same as those provided by the MIDA Act, at Utah Code Ann. § 63H-1-102, as amended.

## Legal Description of Project Area

The Project Area consists of approximately 24,245.46 acres and comprises 27 properties, 24 of which are non-contiguously located throughout the state of Utah (properties are listed in the table below). To the extent available, the below list reflects what is recorded at counties for each respective property. Due to the extensive nature of various identified properties, this Project Area Plan takes into consideration that corrective action may need to be taken with respect to recordation details of the below listed properties. The Project Area is more fully described in Exhibit “A” attached hereto.

<b>Exhibit No.</b>	<b>Owner</b>	<b>Name</b>	<b>Acres</b>
B-1	Utah State Armory Board	Logan Armory	5.27
B-2	Utah State Armory Board	Brigham City Armory	4.84
B-3	Utah State Armory Board	Ogden- John M. Browning Armory	16.12
B-4	Utah State Armory Board	Draper HQ	41.72
B-5	United States Government/Utah State Armory Board	Camp Williams Army Installation	23,761.44
B-6	Utah State Armory Board	Tooele Property	55.57
B-7	Utah State Armory Board	Tooele Armory	1.78
B-8	Tooele City Corporation	Tooele City property (1)	21.07
B-9	Tooele City Corporation	Tooele City property (2) L-shaped Parcel	2.12
B-10	Utah State Armory Board	Vernal Armory	1.54
B-11	Utah State Armory Board	Lehi Armory	1.85
B-12	Utah State Armory Board	American Fork Armory	2.80
B-13	Utah State Armory Board	Springville Armory	1.41

B-14	Utah State Armory Board	Spanish Fork Armory <sup>1</sup>	18.94
B-15	Utah State Armory Board	Nephi Armory	30
B-16	Utah State Armory Board	Price Property	39.12
B-17	Utah State Armory Board	Price Armory	1.09
B-18	Utah State Armory Board	Manti Property	30
B-19	Utah State Armory Board	Manti Armory	1.83
B-20	Utah State Armory Board	Mt. Pleasant Armory	5.53
B-21	Utah State Armory Board	Fillmore Property	50.29
B-22	Utah State Armory Board	Richfield Armory	4.17
B-23	Utah State Armory Board	Beaver Armory	2.13
B-24	Utah State Armory Board	Cedar City Armory	4.8
B-25	Utah State Armory Board	Cedar City Property	60.33
B-26	Utah State Armory Board	St. George Armory/land parcel	73.49
B-27	Utah State Armory Board	Blanding Armory	6.21
Total			24,245.46

---

<sup>1</sup> Spanish Fork Armory property was adopted into the Utah Inland Port Authority (UIPA) Verk Industrial Park Project Area on May 4, 2023; MIDA project area and UIPA project areas coexist with overlapping boundaries. In the event that tax revenue is generated on this parcel, UIPA will receive revenues and disburse to MIDA to support development exclusively on this parcel.

## **Intent**

In 2024, UTNG engaged with MIDA to solicit their assistance in constructing several capital projects in service to their mission. Several of these projects will increase their operational capabilities and others will generate revenue from commercial development on undeveloped and underutilized properties. For those projects that generate revenue, those monies may be used to fund the projects that increase operational capabilities.

Simultaneously, when Tooele City leadership learned that a UTNG Project Area was contemplated on a parcel that was adjacent to two underutilized parcels owned by Tooele City Corporation, they enthusiastically invited MIDA's Project Area into the city. After public meetings wherein the Project Area was discussed between MIDA and city leadership, the Tooele City Council unanimously and irrevocably consented to enter into an interlocal agreement to allow the Tooele City Corporation parcels into the UTNG Project Area. They hope to allow those parcels to be developed in support of UTNG's mission and for their potential to generate tax revenue, thereby creating an economic benefit to the local community.

## **Purposes**

The following are examples of the kinds of projects that may be funded after the creation of the UTNG Project Area:

UTNG has asked MIDA to assist in creating a new gate and access control point into Camp Williams that would be larger, safer, and mitigate traffic delays. The installation's current access control point is located at the southern end of Redwood Road in Bluffdale and is associated with major traffic and safety concerns (several soldiers have suffered from car accident injuries as a result of its small size and inconspicuous location). Moreover, at least a hundred soldiers and Army civilian employees will transition to their new headquarters at Camp Williams after the anticipated closure of Fort Douglas in Salt Lake City. This personnel increase will create additional strain on the already overburdened entry control point.

Additionally, UTNG has requested that MIDA facilitate construction for a new hangar and aviation infrastructure on their property in Cedar City in order to relocate aviation assets from their West Jordan aviation center facility. This move will allow UTNG to more effectively disperse aircraft capabilities to remote and rural areas of southern Utah and would result in increased ability to reinforce state efforts to extinguish wildfires and support emergency recovery missions.

In addition to several other contemplated projects, UTNG would also like MIDA's help in developing an athletic and physical training center at Camp Williams. This facility would accommodate physical fitness training and testing for soldiers and guardsmen. UTNG envisions a multi-use and purpose building with the ability to share assets with other services as well as the local community.

MIDA's statutory purpose is to facilitate the development of Military Land and private land for a military purpose within a Project Area. The specific exercise of MIDA's powers is dependent upon the

needs of the particular project. In this case, UTNG will rely on MIDA to contract for planning, design, and construction of the Infrastructure and Improvements that will be a direct benefit to the Project Area.

Specifically, the purposes and intent of MIDA, with respect to the Project Area, are to:

- A. Encourage and assist development within the Project Area by providing the Infrastructure and Improvements in a timely manner.
- B. Create additional jobs.
- C. Ensure that the Project Area is provided with the necessary Infrastructure and Improvements.
- D. Comply with all contractual obligations and ensure compliance by MIDA's contractors in fulfilling these responsibilities.

## **Findings and Determination**

Pursuant to Utah Code Ann. §63H-1-401(2)(c), the MIDA Board made the following findings and determinations:

### **1. Public Purpose**

*“there is a need to effectuate a public purpose”*

MIDA was created by the Utah Legislature for the specific public purpose of facilitating the development of Military Land and private land for a military purpose in the state of Utah. UTNG has requested that MIDA utilize its authority granted under the MIDA Act to assist in the successful development of its properties. The MIDA Board determined and found that use of its authority under the MIDA Act will be needed to develop the Project Area and fulfill a public purpose.

### **2. Public Benefit**

*“there is a public benefit to the proposed development project”*

The MIDA Board determined and found that there are many public benefits that will result from the creation of this Project Area Plan. Specific public benefits include new entry point infrastructure which will assist with traffic delays and safety concerns along Redwood Road, a public highway. Additionally, when aircraft assets move from the UTNG West Jordan facility to the new location in Cedar City, UTNG will be able to support public efforts to extinguish wildfires and participate in emergency recovery missions in southern Utah. The new facility will also support noise mitigation efforts in the residential areas surrounding the West Jordan aviation facility. Finally, the public will benefit from a joint use arrangement for the new physical training facility on Camp Williams, and more broadly, from a better trained and more operationally ready fighting force protecting the state and country.

### **3. Economic Soundness and Feasibility**

*“it is economically sound and feasible to adopt and carry out the project area plan”*

The MIDA Board determined and found that development of the Project Area as contemplated will be economically sound and feasible. MIDA intends to leverage property tax allocation from commercial infrastructure on undeveloped, underdeveloped, and underutilized UTNG property throughout the state for use in financing and developing operational infrastructure for UTNG. Thus, project funding will come from other revenue generating projects within the Project Area.

#### **4. Local Community**

*“carrying out the project area plan will promote the public peace, health, safety, and welfare of the community in which the project area is located.”*

The MIDA Board determined and found that fulfilling the Project Area Plan will be a significant benefit to the surrounding communities (many of which are rural and underserved) as they will directly benefit from the economic investment and growth that will arise from commercial development on UTNG land. The extent of the development is still to be determined through the master planning and design process contemplated between MIDA, UTNG, and the surrounding communities.

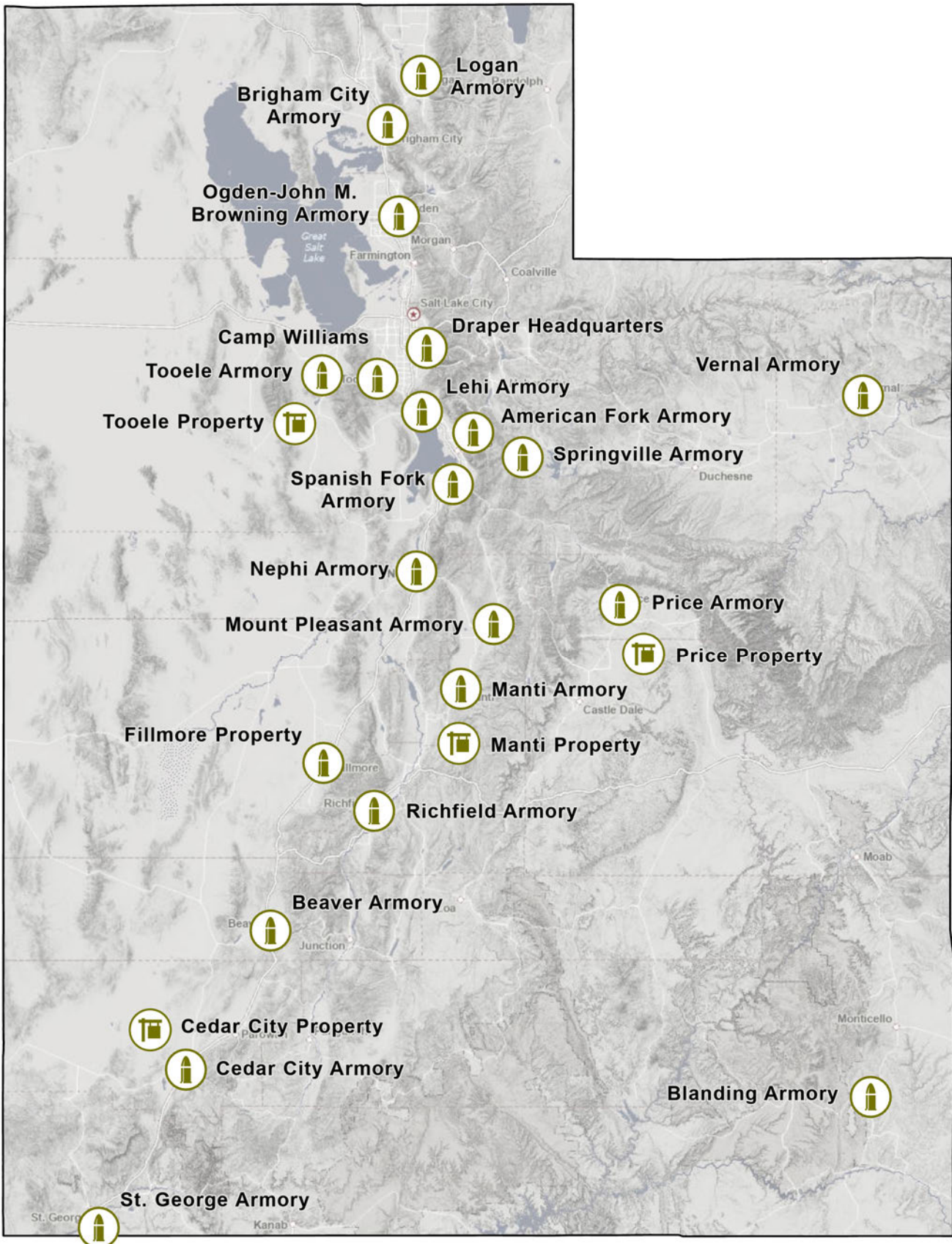
**EXHIBIT "A"**

**MAP**



# Utah National Guard Project Area

Military Installation Development Authority







# Utah National Guard Project Area

American Fork Amory • Utah County



0

0.13

0.25

Miles



# Utah National Guard Project Area

Beaver Armory • Beaver County





# Utah National Guard Project Area

Blanding Armory • San Juan County



0

0.13

0.25

Miles



# Utah National Guard Project Area

Brigham City Armory • Box Elder County



0

0.13

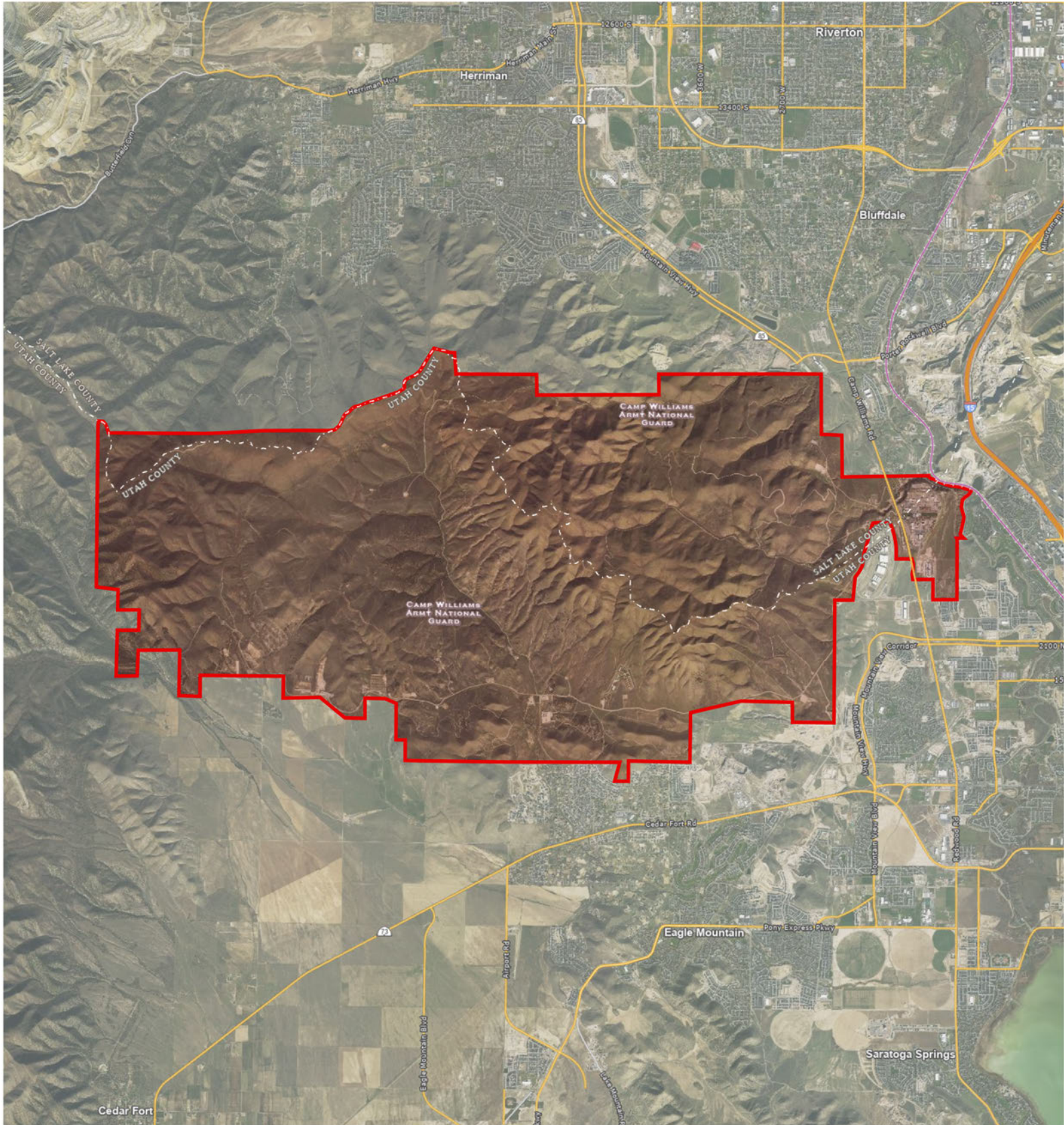
0.25

Miles



# Utah National Guard Project Area

Camp Williams • Salt Lake & Utah Counties



0

2.5

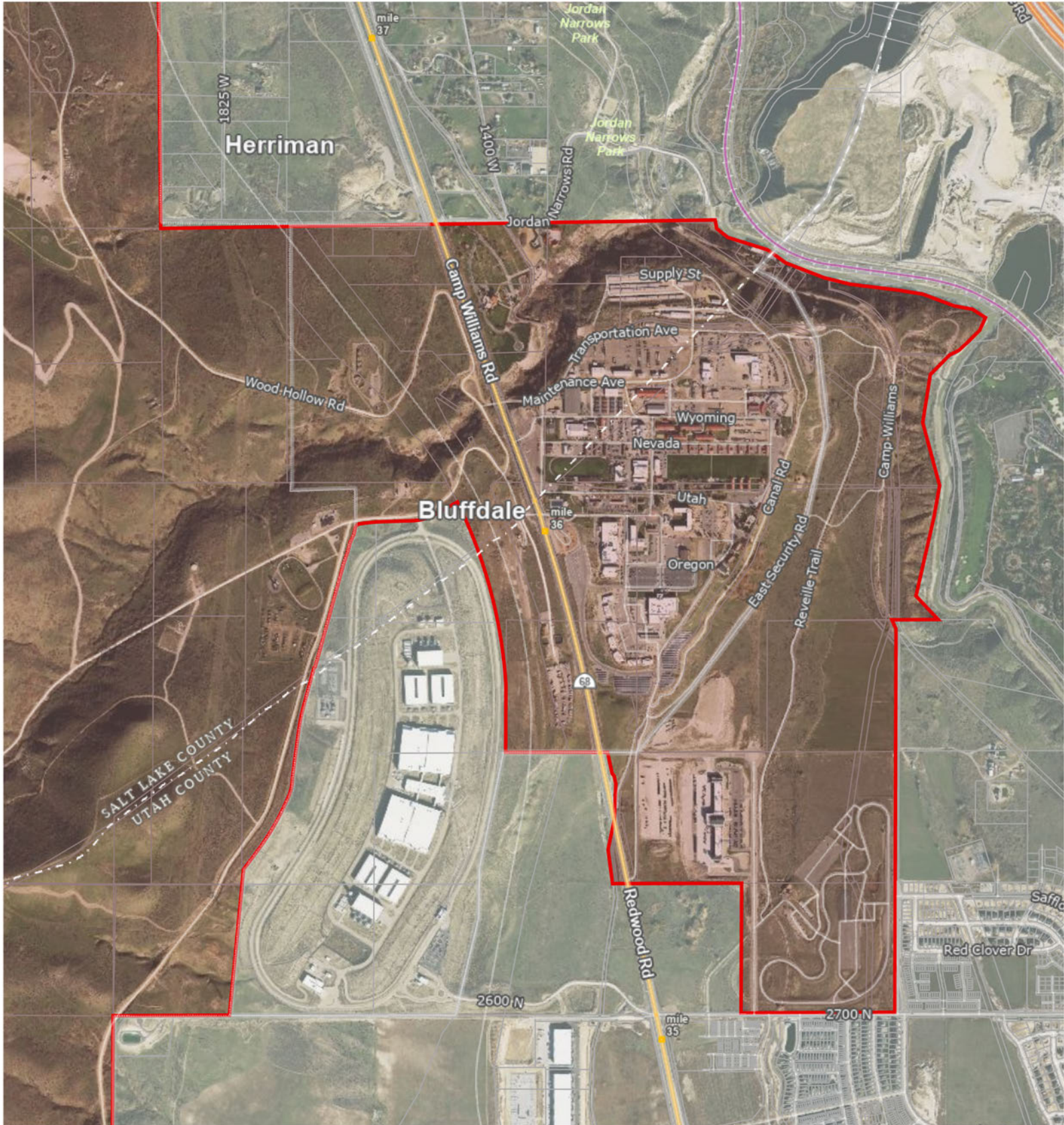
5

Miles



# Utah National Guard Project Area

Camp Williams • Salt Lake & Utah Counties



0

0.38

0.75

Miles



# Utah National Guard Project Area

Cedar City Armory • Iron County



0

0.13

0.25

Miles



# Utah National Guard Project Area

Cedar City Property • Iron County



0

0.25

0.5

Miles





# Utah National Guard Project Area

Draper Headquarters • Salt Lake County



0

0.13

0.25

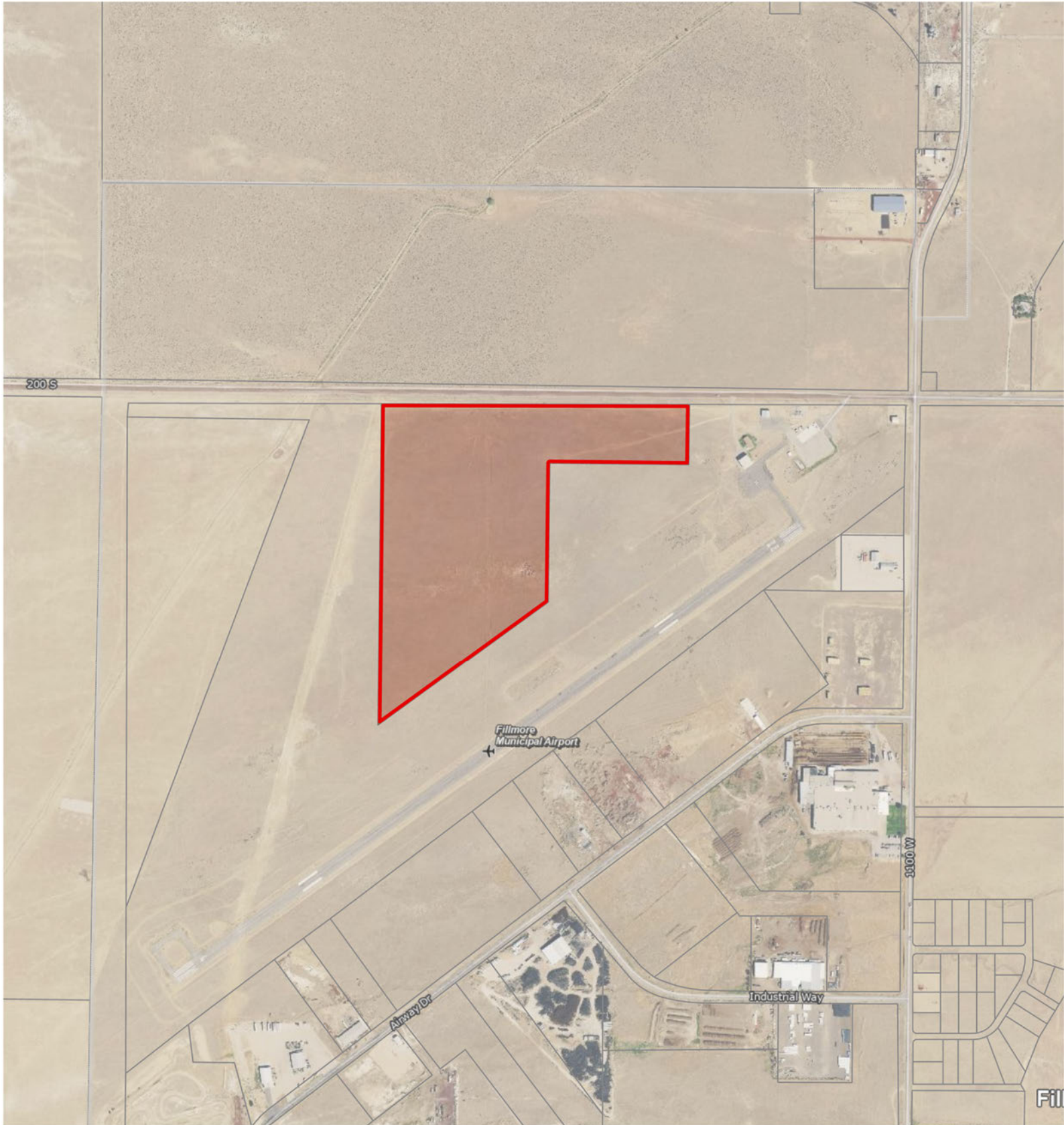
Miles





# Utah National Guard Project Area

Fillmore Property • Millard County



0

0.25

0.5

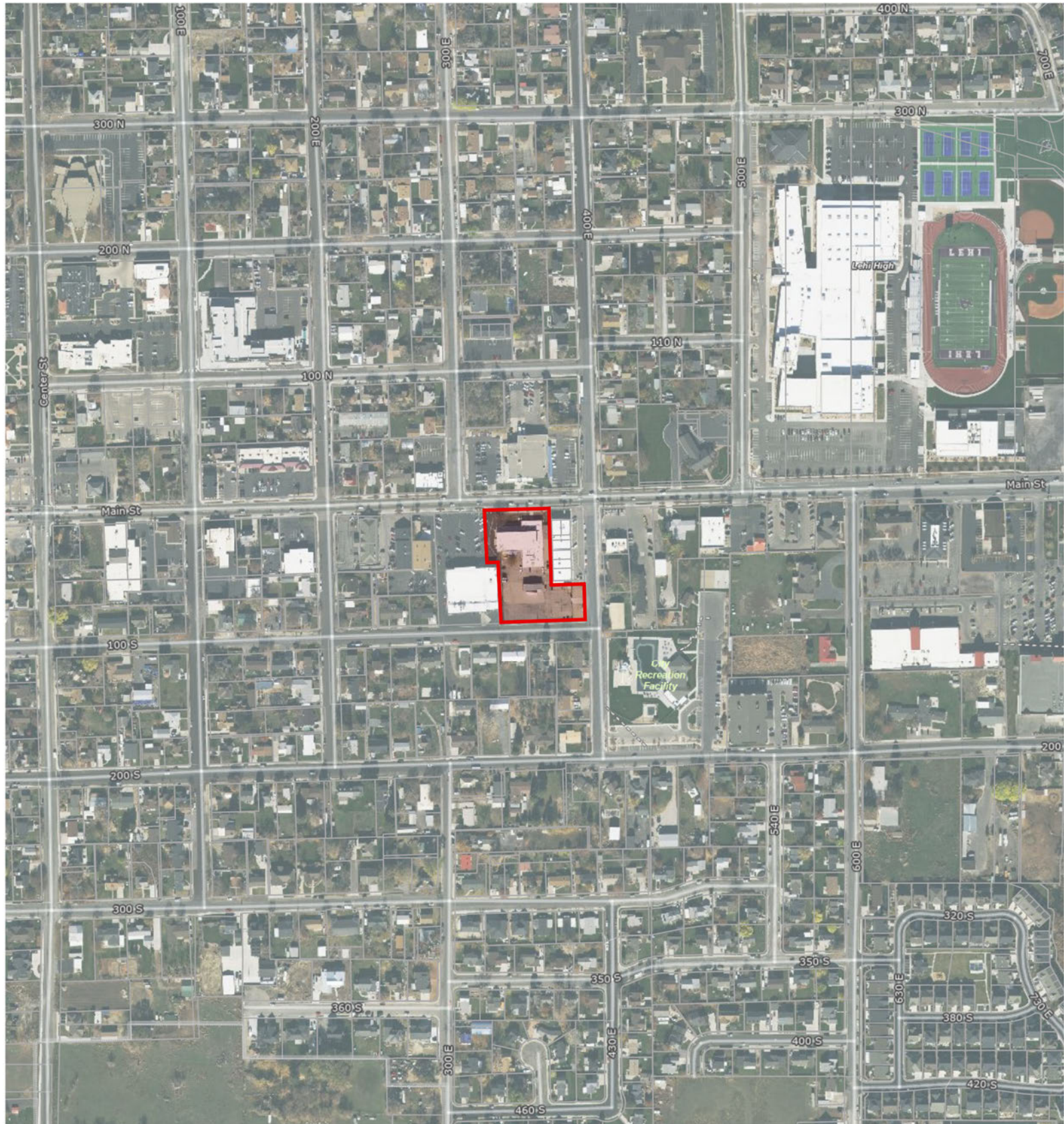
Miles





# Utah National Guard Project Area

Lehi Armory • Utah County



0

0.13

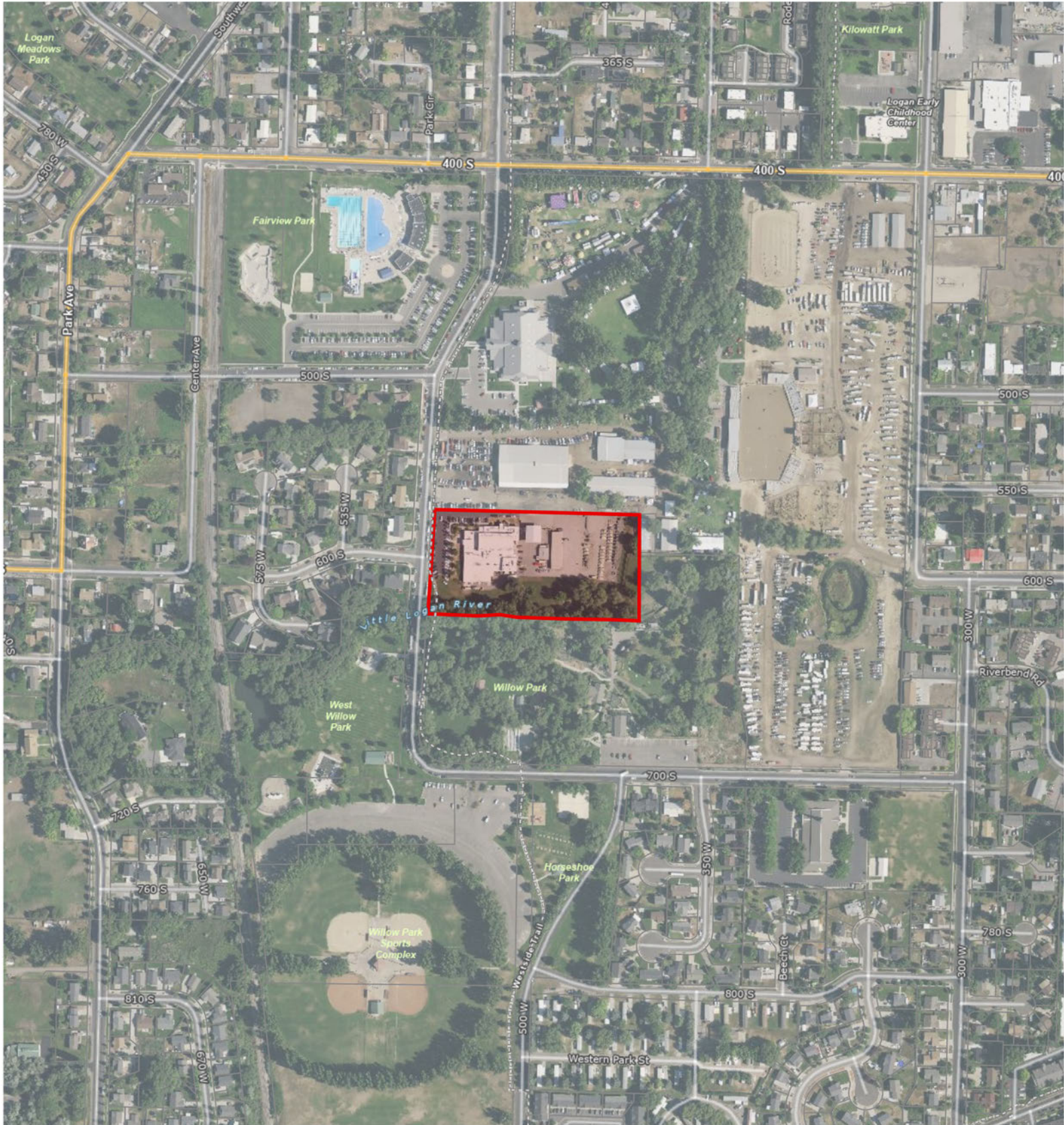
0.25

Miles



# Utah National Guard Project Area

Logan Armory • Cache County



0

0.13

0.25

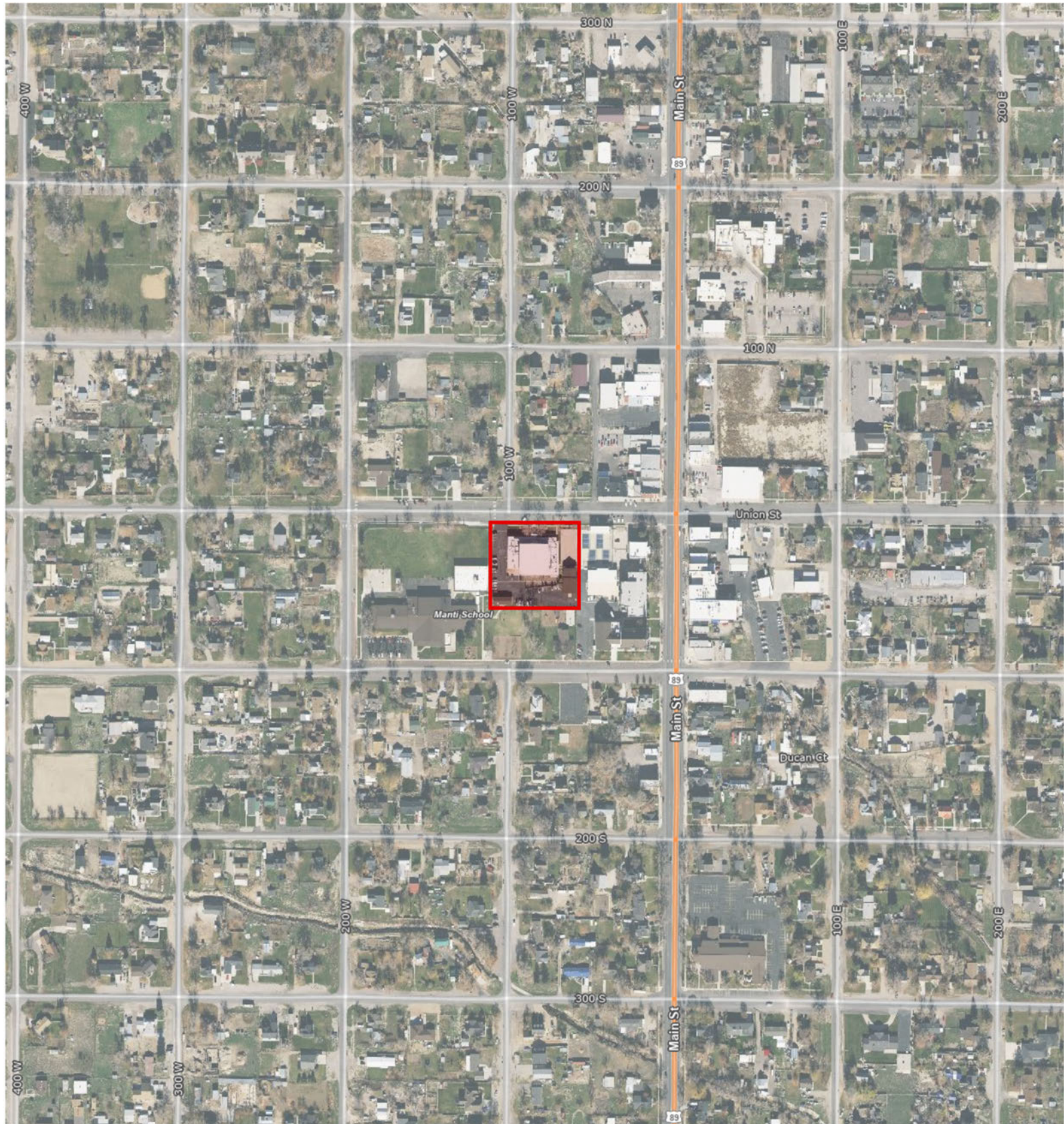
Miles





# Utah National Guard Project Area

Manti Armory • Sanpete County



0

0.13

0.25

Miles



# Utah National Guard Project Area

Manti Property • Sanpete County



0

0.13

0.25

Miles



# Utah National Guard Project Area

Mount Pleasant Armory • Sanpete County



0

0.13

0.25

Miles



# Utah National Guard Project Area

Nephi Armory • Juab County



0

0.25

0.5

Miles







# Utah National Guard Project Area

Ogden-John M. Browning Armory • Weber County



0

0.13

0.25

Miles



# Utah National Guard Project Area

Price Armory • Carbon County



0

0.13

0.25

Miles





# Utah National Guard Project Area

Price Property • Carbon County



0

0.25

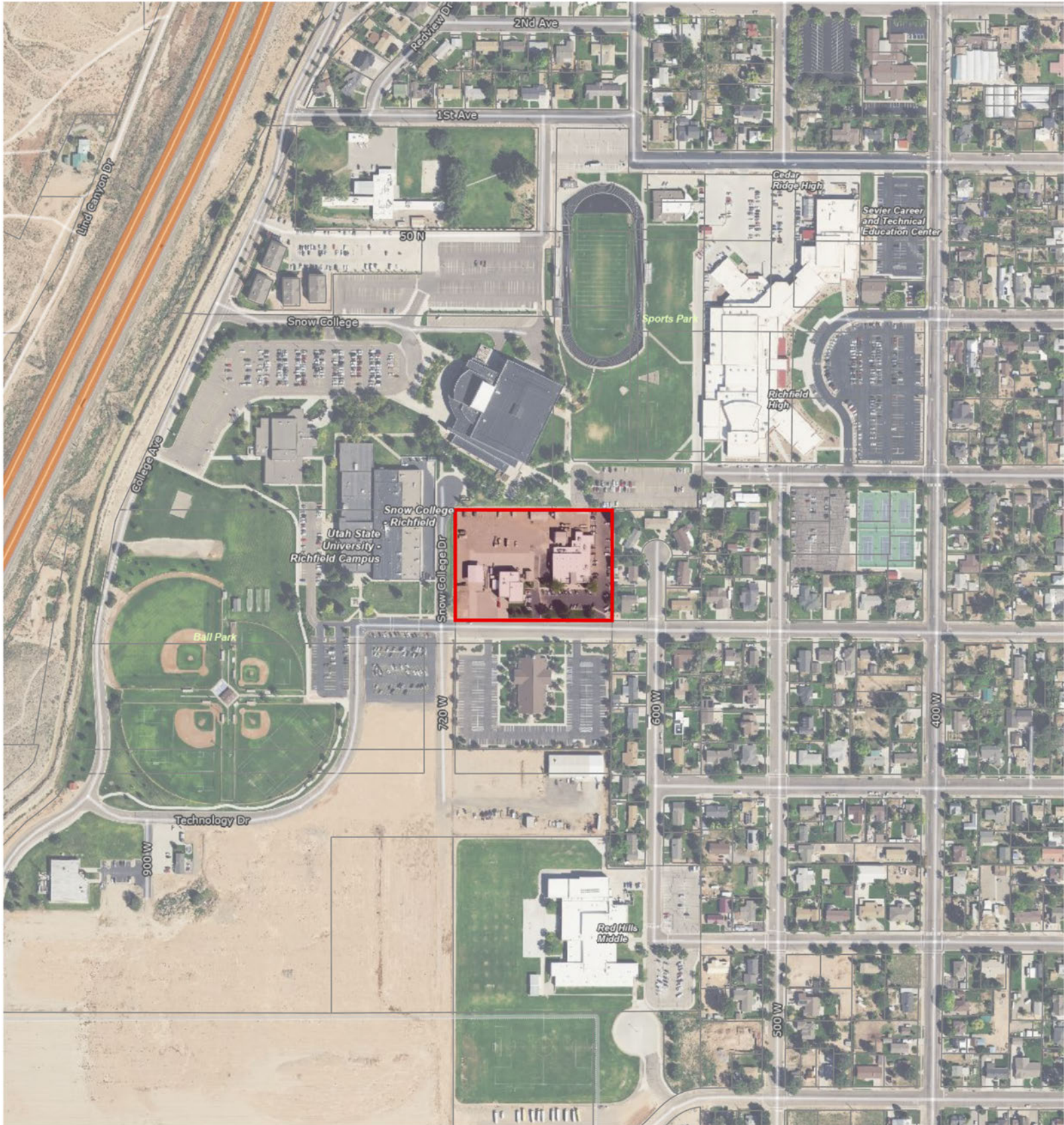
0.5

Miles



# Utah National Guard Project Area

Richfield Armory • Sevier County



0

0.13

0.25

Miles





# Utah National Guard Project Area

Spanish Fork Armory • Utah County



0

0.25

0.5

Miles



# Utah National Guard Project Area

Springville Armory • Utah County



0

0.06

0.13

Miles



# Utah National Guard Project Area

St. George Armory • Washington County



0

0.25

0.5

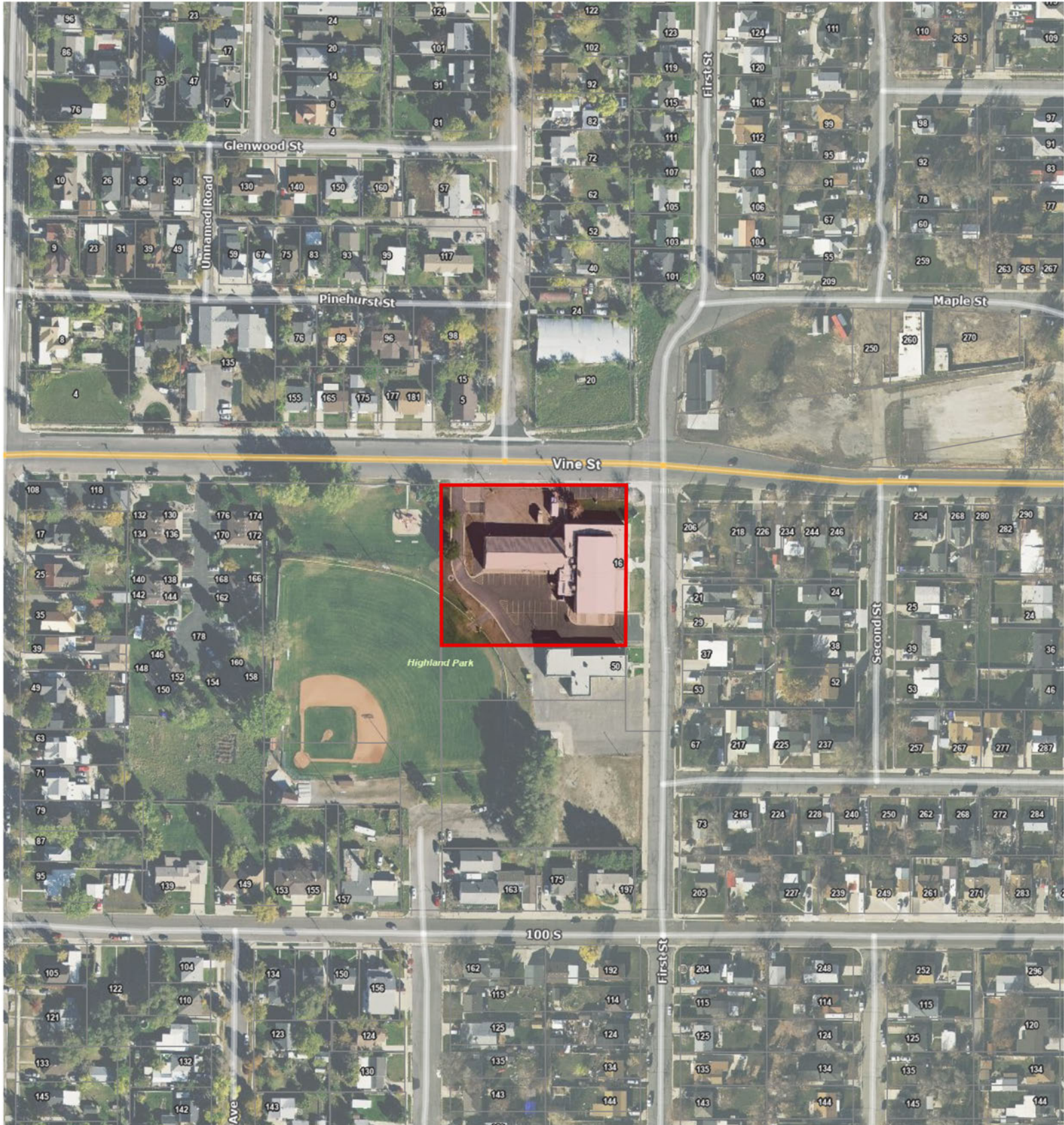
Miles





# Utah National Guard Project Area

Tooele Armory • Tooele County



0

0.06

0.13

Miles







# Utah National Guard Project Area

Tooele Property • Tooele County



0

0.25

0.5

Miles



# Utah National Guard Project Area

Vernal Armory • Uintah County



0

0.06

0.13

Miles

## **EXHIBIT "B"**

### **B-1 Logan Armory**

A part of Section 4, Township 11 North, Range 1 East, Salt Lake Base and Meridian, US Survey:

Beginning at a point, said point being North 89° 39' 5" East, a distance of 1325.54 feet and South 0° 16' 32" West for a distance of 247.51 feet from the West Quarter Corner of Section 4 or POINT OF BEGINNING; and running thence, South 88° 31' 9" East, a distance of 466.79 feet; thence South 0° 13' 20" West, a distance of 342.85 feet; thence North 87° 34' 53" West, a distance of 90.19 feet; thence North 89° 1' 40" West, a distance of 150.12 feet; thence North 88° 9' 35" West, a distance of 152.99 feet; thence North 81° 30' 12" West, a distance of 58.44 feet; thence South 86° 50' 59" West, a distance of 70.98 feet; thence North 87° 37' 40" West, a distance of 162.22 feet; thence North 3° 45' 52" East, a distance of 338.01 feet; thence South 88° 31' 9" East, a distance of 196.44 feet or POINT OF BEGINNING.

Containing 5.27 acres more or less.

### **B-2 Brigham City Armory**

A part of Section 12, Township 9 North, Range 2 West, Salt Lake Base and Meridian, US Survey:

Beginning at a point, said point being North 1° 43' 4" East for a distance of 1362.85 feet; thence North 1° 43' 4" East, a distance of 127.72 feet and South 90° 0' 0" East for a distance of 15.05 feet or POINT OF BEGINNING; and running thence South 88° 55' 32" East, a distance of 631.96 feet; thence North 0° 7' 47" West, a distance of 347.61 feet; thence South 88° 54' 22" West, a distance of 623.66 feet; thence South 1° 19' 48" West, a distance of 323.94 feet or POINT OF BEGINNING.

Containing 4.84 acres more or less.

### **B-3 Ogden-John M. Browning Armory**

A part of Section 16, Township 5 North, Range 1 West, Salt Lake Base & Meridian, U.S. Survey:

Beginning at a point, said point being South 89° 18' 22" East for a distance of 627.41 feet and South 0° 45' 5" East for a distance of 55.17 feet from the West Quarter Corner of Section 16 or POINT OF BEGINNING; and running thence South 59° 39' 37" East, a distance of 253.30 feet; thence South 61° 17' 13" East, a distance of 35.66 feet; thence South 61° 30' 59" East, a distance of 280.00 feet to a point on a 228.43 foot radius curve to the right; thence along said curve a distance of 149.66 feet chord bearing South 61° 3' 50" East; thence into a 296.16 foot radius curve to the left a distance of 111.43 feet chord bearing South 15° 23' 51" East; thence South 0° 39' 29" East, a distance of 128.85 feet; thence South 0° 2' 16" East, a distance of 105.86 feet; thence South 0° 14' 14" West, a distance of 75.78

feet; thence South 0° 22' 13" West, a distance of 75.78 feet; thence South 0° 27' 13" West, a distance of 75.75 feet; thence South 0° 31' 28" West, a distance of 75.70 feet; thence South 0° 40' 46" West, a distance of 75.59 feet; thence South 0° 37' 36" West, a distance of 75.52 feet; thence South 0° 39' 26" West, a distance of 75.41 feet; thence South 0° 38' 16" West, a distance of 28.04 feet; thence North 89° 54' 53" West, a distance of 651.50 feet; thence North 0° 28' 52" East, a distance of 157.00 feet; thence North 0° 25' 20" East, a distance of 6.23 feet; thence North 1° 16' 27" East, a distance of 217.15 feet; thence North 0° 19' 32" East, a distance of 119.08 feet; thence North 1° 5' 22" East, a distance of 334.88 feet; thence North 0° 43' 39" East, a distance of 107.66 feet; thence North 0° 5' 36" East, a distance of 93.16 feet; thence North 1° 0' 34" West, a distance of 88.74 feet; thence North 0° 45' 5" West, a distance of 154.16 feet to the POINT OF BEGINNING.

Containing 16.12 acres more or less.

#### **B-4 Draper Headquarters**

A part of Section 31, Township 3 South, Range 1 East, Salt Lake Base & Meridian, U.S. Survey:

Beginning at a point, said point being North 89° 25' 5" East for a distance of 178.35 feet and North 0° 0' 0" East for a distance of 24.06 feet from the West Quarter Corner of Section 31 or POINT OF BEGINNING; and running thence North 0° 9' 27" East, a distance of 623.58 feet; thence South 89° 58' 30" East, a distance of 292.09 feet; thence North 0° 51' 34" West, a distance of 26.70 feet; thence South 89° 51' 50" East, a distance of 13.96 feet; thence South 88° 36' 45" East, a distance of 5.65 feet; thence North 1° 33' 36" West, a distance of 391.72 feet; thence North 0° 27' 54" East, a distance of 143.00 feet; thence North 89° 45' 48" West, a distance of 10.40 feet; thence North 0° 14' 10" East, a distance of 128.50 feet; thence South 89° 45' 0" East, a distance of 853.14 feet; thence South 1° 13' 43" West, a distance of 128.67 feet; thence South 1° 11' 41" West, a distance of 557.62 feet; thence South 89° 25' 37" East, a distance of 50.00 feet; thence North 90° 0' 0" East, a distance of 134.88 feet; thence South 89° 42' 50" East, a distance of 100.13 feet; thence South 0° 10' 45" West, a distance of 80.00 feet; thence South 89° 47' 50" East, a distance of 565.25 feet; thence South 0° 23' 39" East, a distance of 106.46 feet; thence North 89° 34' 14" East, a distance of 44.18 feet; thence South 0° 21' 56" West, a distance of 109.14 feet; thence South 0° 21' 55" West, a distance of 111.69 feet; thence South 89° 38' 3" East, a distance of 15.00 feet; thence South 0° 21' 56" West, a distance of 175.00 feet; thence South 89° 38' 4" East, a distance of 255.45 feet; thence South 89° 38' 4" East, a distance of 93.21 feet; thence South 89° 38' 7" East, a distance of 17.93 feet; thence South 89° 38' 0" East, a distance of 6.15 feet; thence South 0° 28' 56" West, a distance of 51.70 feet; thence North 89° 48' 16" West, a distance of 6.92 feet; thence South 0° 21' 58" West, a distance of 26.19 feet; thence North 26° 20' 5" West, a distance of 23.55 feet; thence North 26° 20' 19" West, a distance of 5.79 feet; thence North 89° 33' 16" West, a distance of 97.02 feet; thence North 89° 33' 15" West, a distance of 69.03 feet; thence North 89° 33' 16" West, a distance of 118.53 feet; thence North 89° 32' 32" West, a distance of 118.31 feet; thence North 89° 20' 17" West, a distance of 118.52 feet; thence North 89° 20' 16" West, a distance of 118.52 feet; thence North 89° 20' 16" West, a distance of 149.42 feet; thence South 89° 36' 23" West, a distance of 113.97 feet; thence North 89° 36' 12" West, a distance of 130.18 feet; thence North 89°

36' 11" West, a distance of 163.10 feet; thence North 89° 50' 55" West, a distance of 70.85 feet; thence North 89° 33' 36" West, a distance of 179.13 feet; thence North 89° 33' 29" West, a distance of 194.51 feet; thence North 89° 33' 29" West, a distance of 194.51 feet; thence North 89° 45' 40" West, a distance of 556.40 feet to the POINT OF BEGINNING.

Contains 41.72 acres more or less.

### **B-5 Camp Williams**

A part of Section 36, Township 4 South, Range 3 West, Sections 19-36, Township 4 South, Range 2 West, Sections 1-12, Township 5 South, Range 2 West, Sections 19-21 and 26-36, Township 4 South, Range 1 West, Sections 4-9 and 18, Township 5 South, Range 1 West, Salt Lake Base & Meridian, U.S. Survey:

Beginning at a point, said point being North 0° 30' 51" East for a distance of 0.05 feet and North 82° 48' 5" West for a distance of 1.41 feet from the southwest corner of Section 36 or POINT OF BEGINNING; and running thence North 0° 34' 12" East, a distance of 9797.04 feet; thence North 0° 42' 52" East, a distance of 655.58 feet; thence North 7° 34' 38" East, a distance of 283.41 feet; thence South 64° 28' 38" East, a distance of 503.78 feet; thence South 22° 48' 37" East, a distance of 224.60 feet; thence South 16° 52' 22" East, a distance of 358.08 feet; thence South 89° 33' 57" East, a distance of 1179.59 feet; thence South 89° 33' 56" East, a distance of 2486.46 feet; thence South 89° 45' 45" East, a distance of 1422.83 feet; thence South 89° 47' 5" East, a distance of 1322.57 feet; thence North 87° 35' 47" East, a distance of 1314.64 feet; thence North 86° 43' 41" East, a distance of 1312.98 feet; thence North 87° 6' 58" East, a distance of 996.84 feet; thence North 89° 39' 36" East, a distance of 1204.54 feet; thence North 89° 41' 38" East, a distance of 1227.54 feet; thence South 89° 45' 24" East, a distance of 1845.93 feet; thence North 82° 15' 27" East, a distance of 336.99 feet; thence North 48° 40' 35" East, a distance of 184.05 feet; thence North 47° 1' 0" East, a distance of 212.04 feet; thence North 30° 21' 23" East, a distance of 209.76 feet; thence North 24° 37' 17" East, a distance of 280.22 feet; thence North 26° 33' 53" East, a distance of 317.33 feet; thence North 39° 28' 54" East, a distance of 91.34 feet; thence North 66° 26' 15" East, a distance of 177.28 feet; thence North 47° 15' 59" East, a distance of 185.51 feet; thence North 41° 23' 12" East, a distance of 176.60 feet; thence North 52° 47' 9" East, a distance of 147.95 feet; thence North 71° 19' 45" East, a distance of 166.02 feet; thence North 78° 36' 15" East, a distance of 253.36 feet; thence North 63° 26' 7" East, a distance of 214.39 feet; thence North 69° 42' 58" East, a distance of 347.03 feet; thence North 74° 21' 20" East, a distance of 270.60 feet; thence North 71° 5' 41" East, a distance of 1787.39 feet; thence North 57° 44' 29" East, a distance of 399.36 feet; thence North 32° 36' 58" East, a distance of 114.11 feet; thence North 0° 23' 7" West, a distance of 300.87 feet; thence North 18° 36' 43" East, a distance of 152.76 feet; thence North 50° 28' 52" East, a distance of 182.24 feet; thence North 66° 52' 15" East, a distance of 495.75 feet; thence North 49° 59' 24" East, a distance of 473.36 feet; thence North 31° 44' 36" East, a distance of 1553.79 feet; thence North 33° 41' 10" East, a distance of 168.42 feet; thence South 75° 8' 59" East, a distance of 232.99 feet; thence South 75° 8' 51" East, a distance of 217.42 feet; thence South 75° 8' 48" East, a distance of 591.70 feet; thence South 87° 1' 27"

East, a distance of 326.74 feet; thence South 3° 35' 44" East, a distance of 1381.05 feet; thence South 89° 42' 26" East, a distance of 5220.52 feet; thence South 1° 11' 37" East, a distance of 1337.28 feet; thence North 89° 49' 50" East, a distance of 7902.99 feet; thence North 0° 15' 3" West, a distance of 1329.69 feet; thence North 89° 53' 55" East, a distance of 9017.72 feet; thence South 89° 34' 3" East, a distance of 1497.66 feet; thence South 0° 13' 37" East, a distance of 3899.74 feet; thence South 87° 38' 16" East, a distance of 1323.57 feet; thence South 0° 31' 47" East, a distance of 2703.38 feet; thence North 89° 7' 30" East, a distance of 5611.52 feet; thence South 10° 45' 8" East, a distance of 88.69 feet; thence South 51° 29' 9" East, a distance of 143.43 feet; thence South 72° 43' 52" East, a distance of 422.71 feet; thence South 54° 8' 27" East, a distance of 223.56 feet; thence South 68° 43' 45" East, a distance of 416.70 feet; thence South 76° 8' 57" East, a distance of 278.68 feet; thence South 83° 5' 1" East, a distance of 462.48 feet; thence South 80° 53' 0" East, a distance of 275.40 feet; thence South 69° 28' 55" East, a distance of 338.73 feet; thence South 79° 28' 25" East, a distance of 189.26 feet; thence South 57° 14' 14" East, a distance of 154.84 feet; thence South 24° 43' 17" West, a distance of 141.46 feet; thence South 45° 9' 3" West, a distance of 163.91 feet; thence South 47° 19' 17" West, a distance of 127.53 feet; thence South 63° 7' 51" West, a distance of 107.45 feet; thence South 44° 41' 13" West, a distance of 275.15 feet; thence South 9° 0' 7" West, a distance of 165.59 feet; thence South 9° 0' 2" West, a distance of 189.10 feet; thence South 8° 59' 34" West, a distance of 137.18 feet; thence South 14° 59' 56" East, a distance of 251.37 feet; thence South 14° 59' 58" East, a distance of 231.02 feet; thence South 15° 0' 7" East, a distance of 177.22 feet; thence South 10° 5' 29" West, a distance of 325.74 feet; thence South 12° 52' 40" West, a distance of 196.52 feet; thence South 12° 52' 31" West, a distance of 620.14 feet; thence South 43° 14' 33" East, a distance of 325.90 feet; thence South 89° 34' 58" West, a distance of 467.00 feet; thence South 24° 30' 35" East, a distance of 99.70 feet; thence South 0° 10' 31" West, a distance of 104.05 feet; thence South 0° 10' 31" West, a distance of 60.35 feet; thence South 0° 20' 2" West, a distance of 13.90 feet; thence South 0° 11' 44" West, a distance of 1069.98 feet; thence South 0° 11' 44" West, a distance of 2637.21 feet; thence South 89° 49' 28" West, a distance of 1556.70 feet; thence North 0° 16' 14" East, a distance of 1310.40 feet; thence South 89° 49' 22" West, a distance of 1306.94 feet; thence North 7° 27' 40" West, a distance of 346.97 feet; thence North 11° 41' 0" East, a distance of 311.02 feet; thence North 2° 26' 29" East, a distance of 361.19 feet; thence North 12° 1' 36" West, a distance of 80.39 feet; thence North 38° 31' 25" West, a distance of 33.61 feet; thence North 12° 1' 37" West, a distance of 218.26 feet; thence North 89° 56' 12" West, a distance of 1031.80 feet; thence North 0° 11' 29" East, a distance of 682.94 feet to a point on a 4881.45 foot radius curve to the left; thence along said curve a distance of 1929.59 feet chord bearing North 3° 29' 14" West; thence South 61° 25' 15" West, a distance of 269.24 feet to a point on a 510.33 foot radius curve to the right; thence

along said curve a distance of 234.77 feet chord bearing South 61° 41' 39" West; thence South 88° 19' 33" West, a distance of 274.42 feet to a point on a 2000.85 foot radius curve to the left; thence along said curve a distance of 179.68 feet chord bearing South 88° 19' 31" West; thence South 83° 10' 45" West, a distance of 76.80 feet to a point on a 50.01 foot radius curve to the left; thence along said curve a distance of 62.36 feet chord bearing South 83° 10' 55" West; thence South 11° 44' 12" West, a distance of 30.02 feet; thence South 11° 44' 13" West, a distance of 40.78 feet; thence South 25° 21' 51" West, a distance

of 90.00 feet; thence South 13° 54' 35" West, a distance of 92.04 feet; thence South 18° 49' 1" West, a distance of 135.16 feet; thence South 15° 21' 49" West, a distance of 561.30 feet; thence South 15° 21' 49" West for a distance of 525.17 feet; thence South 53° 20' 53" West for a distance of 13.48 feet; thence South 15° 22' 18" West, a distance of 390.17 feet to a point on a 2094.08 foot radius curve to the left; thence along said curve a distance of 263.68 feet chord bearing South 15° 6' 17" West; thence South 7° 37' 24" West, a distance of 458.50 feet; thence South 6° 16' 57" West, a distance of 16.16 feet; thence South 2° 47' 37" West, a distance of 16.16 feet; thence South 3° 27' 33" West, a distance of 34.86 feet; thence South 7° 27' 3" West, a distance of 34.86 feet; thence South 11° 26' 32" West, a distance of 34.86 feet; thence South 15° 26' 5" West, a distance of 34.86 feet; thence South 19° 25' 32" West, a distance of 34.86 feet; thence South 23° 25' 2" West, a distance of 34.86 feet; thence South 25° 25' 25" West, a distance of 149.95 feet to a point on a 3004.64 foot radius curve to the right; thence along said curve a distance of 695.21 feet chord bearing South 26° 48' 54" West; thence South 5° 24' 47" West, a distance of 155.70 feet; thence South 5° 27' 13" West, a distance of 149.26 feet; thence South 5° 32' 9" West, a distance of 1177.75 feet; thence South 89° 45' 34" West, a distance of 1177.26 feet; thence South 0° 21' 30" West, a distance of 6472.08 feet; thence South 0° 21' 53" West, a distance of 1510.42 feet; thence North 89° 18' 20" West, a distance of 2688.41 feet; thence North 0° 33' 22" West, a distance of 1292.12 feet; thence North 88° 39' 46" West, a distance of 3334.60 feet; thence South 77° 3' 44" West, a distance of 3340.12 feet; thence South 0° 48' 33" West, a distance of 3208.78 feet; thence North 88° 52' 39" West, a distance of 3975.59 feet; thence South 0° 26' 30" West, a distance of 1314.79 feet; thence North 89° 30' 22" West, a distance of 890.25 feet; thence North 15° 5' 35" East, a distance of 1271.18 feet; thence North 89° 57' 45" West, a distance of 1385.03 feet; thence North 89° 50' 45" West, a distance of 5828.88 feet; thence North 89° 13' 49" West, a distance of 5370.54 feet; thence North 88° 43' 31" West, a distance of 1316.49 feet; thence North 0° 18' 30" East, a distance of 1326.23 feet; thence North 88° 36' 5" West, a distance of 606.56 feet; thence North 0° 22' 42" East, a distance of 2352.27 feet; thence North 66° 31' 16" West, a distance of 775.01 feet; thence North 88° 40' 21" West, a distance of 1309.40 feet; thence South 0° 0' 53" West, a distance of 1310.52 feet; thence North 88° 28' 49" West, a distance of 1302.64 feet; thence North 50° 29' 9" West, a distance of 2084.96 feet; thence South 88° 53' 14" West, a

distance of 2392.41 feet; thence North 0° 48' 49" East, a distance of 1414.44 feet; thence North 89° 21' 24" West, a distance of 5390.60 feet; thence South 0° 39' 58" West, a distance of 1364.84 feet; thence North 87° 55' 9" West, a distance of 1364.49 feet; thence North 0° 58' 27" East, a distance of 2999.30 feet; thence South 89° 36' 0" West, a distance of 2688.74 feet; thence South 2° 17' 1" West, a distance of 1701.25 feet; thence South 89° 20' 59" West, a distance of 1362.32 feet; thence North 1° 30' 46" East, a distance of 3016.32 feet; thence North 89° 50' 57" East, a distance of 1382.55 feet; thence North 1° 24' 50" East, a distance of 1307.87 feet; thence North 89° 59' 0" West, a distance of 1392.78 feet; thence North 0° 57' 51" East, a distance of 1311.64 feet; thence North 82° 48' 17" West, a distance of 1414.95 feet to the POINT OF BEGINNING.

Containing 23,761.44 acres more or less.

## **B-6 Tooele Property**

A part of Sections 5-6, Township 4 South, Range 4 West, Salt Lake Base & Meridian, U.S.  
Survey:

Beginning at a point, said point being North 0° 3' 35" West for a distance of 953.36 feet and North 89° 56' 25" East for a distance of 157.39 feet from the Southwest Corner of Section 5 or POINT OF BEGINNING; and running thence North 37° 47' 6" East, a distance of 727.73 feet; thence North 38° 7' 54" East, a distance of 379.87 feet; thence North 65° 40' 12" West, a distance of 2501.02 feet; thence South 24° 32' 9" West, a distance of 946.04 feet; thence South 24° 19' 21" West, a distance of 38.14 feet; thence South 21° 31' 50" West, a distance of 69.92 feet; thence South 65° 40' 21" East, a distance of 1375.89 feet; thence South 64° 9' 59" East, a distance of 865.46 feet to the POINT OF BEGINNING.

**Less and excepting the following:**

A part of Section 6, Township 4 South, Range 4 West, Salt Lake Base & Meridian, U.S.  
Survey:

Beginning at a point, said point being South 89° 56' 35" West for a distance of 990.47 feet and South 24° 26' 22" West for a distance of 338.32 feet from the East Quarter Corner of Section 6 or POINT OF BEGINNING; and running thence South 24° 26' 22" West, a distance of 343.89 feet; thence North 65° 33' 38" West, a distance of 401.35 feet; thence North 24° 26' 22" East, a distance of 175.94 feet; thence South 65° 33' 38" East, a distance of 271.85 feet; thence North 24° 26' 22" East, a distance of 167.95 feet; thence South 65° 33' 38" East, a distance of 129.50 feet to the POINT OF BEGINNING.

Contains 55.57 acres more or less.

**B-7 Tooele Armory**

A part of Section 27, Township 3 South, Range 4 West, Salt Lake Base & Meridian, U.S.  
Survey:

Beginning at a point, said point being North 0° 16' 8" East for a distance of 163.13 feet and North 89° 59' 59" East for a distance of 17.63 feet from the West Quarter Corner of Section 27 or POINT OF BEGINNING; and running thence North 0° 8' 10" West, a distance of 259.30 feet; thence North 90° 0' 0" East, a distance of 299.93 feet; thence South 0° 16' 14" West, a distance of 259.31 feet; thence North 90° 0' 0" West, a distance of 199.96 feet; thence South 90° 0' 0" West, a distance of 98.14 feet to the POINT OF BEGINNING.

Contains 1.78 acres more or less.

**B-8 Tooele City Property (1)**

BEG ON THE E R/W LI OF THE UN PACIFIC R/R AT A PT THAT IS S 89°45'13" W ALG THE SEC LI 1966.70 FT & S 12°07'50" W ALG SD R/R R/W LI 2082.03 FT FR THE NE COR SEC 6, T4S, R4W, SLB&M, RUN TH ALG SD R/ R/W LI S 12°07'50 W 964.34 FT; TH S 65°40'34" E 871.96 FT; TH N 24°19'26" E 942.58 FT; TH N 65°40'34" W 1075.64 FT TO THE POB. OUT OF 2-136-5



Contains 21.07 acres more or less

**B-9 Tooele City Property (2) L- shape Parcel**

BEG AT A PT THAT IS S 89°45'13" W ALG THE SEC LI 1548.95 FT AND DUE S 2939.99 FT FROM THE DEPENDENT RESURVEY 1982 MONUMENTED NE COR OF SEC 6, T4S, R4W, SLB&M, RUN TH S 65°33'38" E 271.85 FT; TH N 24°26'22" E 167.95 FT; TH S 65°33'38" E 129.50 FT; TH S 24°26'22" W 343.89 FT; TH N 65°33'38" W 401.35 FT; TH N 24°26'22" E 175.94 FT TO POB. OUT OF 2-136-2 FOR 2003

Contains 2.12 acres more or less

**B-10 Vernal Armory**

A part of Section 23, Township 4 South, Range 21 East, Salt Lake Base & Meridian, U.S. Survey:

Beginning at a point, said point being North 2° 2' 35" West for a distance of 1355.44 feet and South 87° 43' 49" West for a distance of 60.10 feet from the Southeast Corner of Section 23 or POINT OF BEGINNING; and running thence South 87° 43' 49" West, a distance of 209.01 feet; thence South 88° 9' 53" West, a distance of 64.46 feet; thence South 88° 44' 49" West, a distance of 17.99 feet; thence North 1° 48' 35" West, a distance of 123.99 feet; thence North 2° 11' 8" West, a distance of 106.00 feet; thence North 87° 48' 41" East, a distance of 291.75 feet; thence South 1° 54' 34" East, a distance of 230.38 feet to the POINT OF BEGINNING.

Contains 1.54 acres more or less.

**B-11 Lehi Armory**

A part of Section 16, Township 5 South, Range 1 East, Salt Lake Base & Meridian, U.S. Survey:

Beginning at a point, said point being South 89° 50' 22" East for a distance of 1463.87 feet and South 1° 36' 0" East for a distance of 32.22 feet from the Western 1/16<sup>th</sup> Corner of the Northwest Quarter of the Northwest Quarter of Section 16 or POINT OF BEGINNING; and running thence South 2° 51' 0" East, a distance of 170.17 feet; thence North 88° 6' 3" East, a distance of 36.05 feet; thence South 2° 51' 0" East, a distance of 194.94 feet; thence North 88° 6' 0" East, a distance of 273.12 feet; thence North 1° 43' 59" West, a distance of 115.21 feet; thence South 88° 18' 43" West, a distance of 106.55 feet; thence North 1° 41' 55" West, a distance of 248.36 feet; thence South 88° 24' 0" West, a distance of 209.89 feet to the POINT OF BEGINNING.

Contains 1.85 acres more or less.

**B-12 American Fork Armory**

A part of Sections 23, 24, Township 5 South, Range 1 East, Salt Lake Base & Meridian, U.S. Survey:

Beginning at a point, said point being North 0° 0' 3" East for a distance of 596.52 feet from the East Quarter Corner of Section 23 or POINT OF BEGINNING; and running thence North 89° 20' 35" West for a distance of 119.17 feet; thence North 88° 49' 19" West, a distance of 140.79 feet; thence North 88° 49' 16" West, a distance of 12.71 feet; thence North 0° 42' 25" East, a distance of 252.03 feet; thence South 89° 14' 33" East, a distance of 125.23 feet; thence South 89° 14' 33" East, a distance of 70.76 feet; thence South 89° 14' 58" East, a distance of 1.95 feet; thence South 0° 45' 9" West, a distance of 9.19 feet; thence South 0° 46' 11" West, a distance of 0.81 feet; thence South 89° 14' 50" East, a distance of 269.63 feet; thence South 89° 14' 54" East, a distance of 1.93 feet; thence South 0° 42' 40" West, a distance of 47.23 feet; thence South 0° 42' 39" West, a distance of 58.94 feet; thence South 0° 42' 41" West, a distance of 58.99 feet; thence South 0° 42' 40" West, a distance of 58.98 feet; thence South 0° 42' 41" West, a distance of 58.98 feet; thence South 0° 42' 40" West, a distance of 54.53 feet; thence North 89° 20' 43" West, a distance of 60.03 feet; thence North 0° 51' 10" West, a distance of 95.06 feet; thence North 89° 20' 37" West, a distance of 134.19 feet to the POINT OF BEGINNING.

Containing 2.80 acres more or less.

### **B-13 Springville Armory**

A part of Sections 33-34, Township 7 South, Range 3 East, Salt Lake Base & Meridian, U.S. Survey:

Beginning at a point, said point being South 0° 2' 39" East for a distance of 27.00 feet from the West Quarter Corner of Section 34 or POINT OF BEGINNING; and running thence South 90° 0' 0" West for a distance of 5.58 feet; thence along a curve to the left with a radius of 29.99 feet, a chord bearing North 89° 59' 17" West, a distance of 47.13 feet; thence South 0° 0' 0" West, a distance of 60.00 feet; thence South 0° 0' 0" West, a distance of 60.60 feet; thence South 0° 0' 0" West, a distance of 60.60 feet; thence South 0° 0' 0" West, a distance of 33.60 feet; thence North 90° 0' 0" East, a distance of 35.77 feet; thence North 90° 0' 0" East, a distance of 215.87 feet; thence North 0° 0' 0" West, a distance of 33.60 feet; thence North 0° 0' 0" West, a distance of 60.60 feet; thence North 0° 0' 0" West, a distance of 60.60 feet; thence North 0° 0' 0" West, a distance of 60.00 feet; thence along a curve to the left with a radius of 30.99 feet, a chord bearing North 1° 48' 52" West, a distance of 46.73 feet; thence South 90° 0' 0" West, a distance of 186.06 feet to the POINT OF BEGINNING.

Contains 1.41 acres more or less.

### **B-14 Spanish Fork Armory**

A part of Section 1, Township 8 South, Range 2 East, Salt Lake Base & Meridian, U.S. Survey:

Beginning at a point, said point being South 89° 12' 25" West for a distance of 67.33 feet and North 0° 18' 49" West for a distance of 65.99 feet from the Southeast Corner of Section 1 or POINT OF BEGINNING; and running thence South 89° 41' 11" West, a distance of 828.34 feet; thence North 0° 17' 21" West, a distance of 946.40 feet; thence North 89° 18' 49" East, a distance of 204.93 feet; thence North 0° 19' 15" West, a distance of 219.93 feet; thence North 89° 13' 14" East, a distance of 26.89 feet; thence South 88° 40' 45" East, a

distance of 36.15 feet to a point on a 519.53 foot radius curve to the right; thence along said curve a distance of 294.00 feet chord bearing South 86° 32' 53" East; thence to a point on a 553.66 foot radius curve to the right; thence along said curve a distance of 106.85 feet chord bearing South 53° 40' 34" East; thence to a point on a 565.48 foot radius curve to the right; thence along said curve a distance of 105.17 feet chord bearing South 41° 44' 41" East; thence to a point on a 1213.45 foot radius curve to the right; thence along said curve a distance of 154.98 feet chord bearing South 30° 3' 34" East; thence to a point on a 1078.41 foot radius curve to the right; thence along said curve a distance of 413.42 feet chord bearing South 22° 16' 59" East; thence South 0° 18' 49" East, a distance of 368.81 feet to the POINT OF BEGINNING.

Contains 18.94 acres more or less.

### **B-15 Nephi Armory**

A part of Section 30, Township 12 South, Range 1 East, Salt Lake Base & Meridian, U.S. Survey:

Beginning at a point, said point being North 0° 3' 44" West for a distance of 563.12 feet and North 89° 51' 2" East for a distance of 41.01 feet from the West Quarter Corner of Section 30 or POINT OF BEGINNING; and running thence North 0° 8' 58" West, a distance of 1539.42 feet; thence North 89° 45' 33" East, a distance of 852.04 feet; thence South 0° 4' 54" West, a distance of 1539.42 feet; thence South 89° 45' 28" West, a distance of 845.83 feet to the POINT OF BEGINNING.

Contains 30.00 acres more or less.

### **B-16 Price Property**

A part of Section 27, Township 14 South, Range 10 East, Salt Lake Base & Meridian, U.S. Survey:

Beginning at a point, said point being South 89° 33' 13" West for a distance of 1344.34 feet and South 0° 26' 45" East for a distance of 18.39 feet from the Northeast Corner of Section 27 or POINT OF BEGINNING; and running thence South 0° 14' 43" West, a distance of 1298.17 feet; thence North 89° 51' 7" West, a distance of 647.27 feet; thence North 89° 51' 7" West, a distance of 275.57 feet; thence North 89° 51' 7" West, a distance of 300.90 feet; thence North 89° 51' 7" West, a distance of 48.96 feet; thence South 13° 53' 13" East, a distance of 19.98 feet; thence South 89° 16' 50" West, a distance of 46.70 feet; thence North 18° 22' 48" West, a distance of 13.84 feet; thence North 0° 0' 0" West, a distance of 1030.05 feet; thence South 84° 52' 57" East, a distance of 13.05 feet; thence North 12° 39' 24" West, a distance of 64.49 feet; thence North 6° 48' 9" West, a distance of 23.06 feet; thence North 4° 21' 14" East, a distance of 46.11 feet; thence North 0° 29' 21" East, a distance of 115.88 feet; thence North 88° 54' 39" East, a distance of 1324.15 feet to the POINT OF BEGINNING.

Contains 39.12 acres more or less.

### **B-17 Price Armory**

A part of Section 16, Township 14 South, Range 10 East, Salt Lake Base & Meridian, U.S. Survey:

Beginning at a point, said point being South 89° 47' 17" West for a distance of 929.33 feet and North 0° 31' 33" West for a distance of 290.87 feet from the West Quarter Corner of Section 16 or POINT OF BEGINNING; and running thence South 89° 12' 45" West, a distance of 183.97 feet; thence North 0° 11' 20" West, a distance of 260.50 feet; thence South 89° 45' 8" East, a distance of 182.45 feet; thence South 0° 31' 33" East, a distance of 257.20 feet to the POINT OF BEGINNING.

Contains 1.09 acres more or less.

### **B-18 Manti Property**

A part of Section 13, Township 18 South, Range 2 East and Section 18, Township 18 South, Range 3 East, Salt Lake Base & Meridian, U.S. Survey:

Beginning at a point, said point being South 0° 16' 18" West for a distance of 1351.74 feet and South 89° 59' 2" East for a distance of 0.03 feet from the Northeast Corner of Section 13, Township 18 South, Range 2 East, Salt Lake Base & Meridian or POINT OF BEGINNING; and running thence South 0° 16' 13" West, a distance of 1351.71 feet; thence South 0° 16' 18" West, a distance of 1351.74 feet; thence North 87° 55' 50" West, a distance of 1324.36 feet; thence North 87° 56' 0" West, a distance of 1324.33 feet; thence North 0° 9' 34" East, a distance of 1335.50 feet; thence South 88° 16' 52" East, a distance of 16.02 feet; thence North 0° 0' 4" East, a distance of 802.80 feet; thence North 54° 43' 55" East, a distance of 814.99 feet; thence South 89° 59' 2" East, a distance of 1974.60 feet to the POINT OF BEGINNING.

Contains 157.67 acres more or less.

### **B-19 Manti Armory**

A part of Section 12, Township 18 South, Range 2 East, Salt Lake Base & Meridian, U.S. Survey:

Beginning at a point, said point being North 89° 30' 36" West for a distance of 918.70 feet and North 0° 0' 0" West for a distance of 553.87 feet from the East Quarter Corner of Section 12 or POINT OF BEGINNING; and running thence North 89° 54' 40" West, a distance of 286.92 feet; thence North 0° 5' 21" East, a distance of 277.52 feet; thence South 89° 54' 40" East, a distance of 287.77 feet; thence South 0° 15' 57" West, a distance of 277.52 feet to the POINT OF BEGINNING

Contains 1.83 acres more or less.

### **B-20 Mount Pleasant Armory**

A part of Section 10, Township 15 South, Range 4 East, Salt Lake Base & Meridian, U.S. Survey:

Beginning at a point, said point being North 1° 56' 54" West for a distance of 681.28 feet and North 89° 0' 11" East for a distance of 997.78 feet from the West Quarter Corner of Section 10 or POINT OF BEGINNING; and running thence North 1° 54' 0" East, a distance of 550.21 feet; thence South 89° 38' 2" East, a distance of 551.18 feet; thence South 89° 38' 4" East, a distance of 33.94 feet; thence South 26° 30' 30" West, a distance of 87.58 feet; thence South 30° 57' 35" West, a distance of 547.62 feet; thence North 89° 37' 58" West, a distance of 282.55 feet to the POINT OF BEGINNING.

Contains 5.53 acres more or less.

### **B-21 Fillmore Property**

A part of Section 25, Township 21 South, Range 5 West, Salt Lake Base & Meridian, U.S. Survey:

Beginning at a point, said point being North 89° 26' 33" West for a distance of 1341.68 feet and South 0° 8' 53" West for a distance of 39.28 feet from the Northeast Corner of Section 25 or POINT OF BEGINNING; and running thence North 89° 51' 7" West, a distance of 1996.59 feet; thence South 0° 36' 44" West, a distance of 2084.47 feet; thence North 54° 2' 53" East, a distance of 1363.00 feet; thence North 0° 40' 41" East, a distance of 899.54 feet; thence South 89° 22' 18" East, a distance of 900.00 feet; thence North 0° 43' 16" East, a distance of 389.38 feet to the POINT OF BEGINNING.

Contains 50.29 acres more or less.

### **B-22 Richfield Armory**

A part of Section 26, Township 23 South, Range 3 West, Salt Lake Base & Meridian, U.S. Survey:

Beginning at a point, said point being South 89° 37' 29" West for a distance of 1624.53 feet and North 0° 17' 14" East for a distance of 431.75 feet from the Southeast Corner of Section 26 or POINT OF BEGINNING; and running thence North 89° 55' 22" West, a distance of 507.91 feet; thence North 0° 2' 25" West, a distance of 357.10 feet; thence South 89° 59' 27" East, a distance of 313.80 feet; thence South 89° 38' 49" East, a distance of 194.55 feet; thence South 0° 4' 42" East, a distance of 146.01 feet; thence South 0° 4' 42" East, a distance of 105.01 feet; thence South 0° 17' 15" West, a distance of 105.52 feet to the POINT OF BEGINNING.

Contains 4.17 acres more or less.

### **B-23 Beaver Armory**

A part of Section 21, Township 29 South, Range 7 West, Salt Lake Base & Meridian, U.S. Survey:

Beginning at a point, said point being North 88° 49' 48" West for a distance of 787.11 feet and North 0° 15' 56" East for a distance of 130.54 feet from the from East Quarter Corner of Section 21 or POINT OF BEGINNING; and running thence North 0° 15' 56" East, a distance

of 118.03 feet; thence North 89° 44' 2" West, a distance of 80.02 feet; thence North 0° 15' 58" East, a distance of 283.08 feet; thence South 89° 44' 2" East, a distance of 396.11 feet; thence South 0° 15' 57" West, a distance of 185.05 feet; thence North 89° 44' 3" West, a distance of 198.06 feet; thence South 0° 15' 56" West, a distance of 98.03 feet to the POINT OF BEGINNING.

Containing 2.13 acres more or less.

### **B-24 Cedar City Armory**

A part of Sections 3 & 4, Township 36 South, Range 11 West, Salt Lake Base & Meridian, U.S. Survey:

Beginning at a point, said point being North 2° 22' 26" East for a distance of 815.72 from the Southeast Corner of Section 4 or POINT OF BEGINNING; and running thence North 89° 34' 21" West for a distance of 194.74; thence North 0° 4' 44" West, a distance of 456.89 feet; thence to a point on a 651.93 foot radius curve to the left; thence along said curve a distance of 177.68 feet chord bearing South 74° 16' 6" East; thence South 89° 29' 3" East, a distance of 303.15 feet; thence South 0° 6' 44" East, a distance of 433.32 feet; thence North 89° 34' 21" West, a distance of 284.08 feet to the POINT OF BEGINNING.

Contains 4.80 acres more or less.

### **B-25 Cedar City Property**

A part of and Sections 32-33, Township 35 South, Range 11 West and Section 4, Township 36 South, Range 11 West, Salt Lake Base & Meridian, U.S. Survey:

Beginning at a point, said point being South 1° 33' 51" West for a distance of 42.23 feet and South 89° 6' 57" East for a distance of 61.35 feet from the Northwest Corner of Section 4, Township 36 South, Range 11 West, Salt Lake Base & Meridian or POINT OF BEGINNING; and running thence North 0° 53' 3" East, a distance of 34.34 feet; thence South 88° 44' 37" East, a distance of 31.48 feet; thence North 1° 0' 6" East, a distance of 427.30 feet; thence North 1° 0' 6" East, a distance of 163.23 feet; thence North 1° 0' 6" East, a distance of 192.59 feet; thence North 31° 30' 36" West, a distance of 46.31 feet; thence North 31° 30' 36" West, a distance of 21.06 feet; thence North 28° 25' 21" West, a distance of 18.43 feet; thence North 22° 23' 12" West, a distance of 18.43 feet; thence North 16° 21' 13" West, a distance of 18.43 feet; thence North 10° 19' 10" West, a distance of 18.43 feet; thence South 88° 52' 42" East, a distance of 37.11 feet; thence North 1° 11' 31" East, a distance of 88.86 feet; thence North 1° 11' 55" East, a distance of 98.32 feet; thence North 1° 11' 55" East, a distance of 98.32 feet; thence North 1° 14' 11" East, a distance of 15.72 feet; thence North 89° 13' 58" East, a distance of 1225.10 feet; thence South 89° 30' 47" East, a distance of 891.23 feet; thence South 0° 1' 39" West, a distance of 1099.21 feet; thence South 46° 55' 20" West, a distance of 227.33 feet; thence North 88° 42' 26" West, a distance of 606.82 feet; thence South 89° 30' 53" West, a distance of 1369.07 feet; thence South 89° 30' 59" West, a distance of 3.55 feet to the POINT OF BEGINNING.

Contains 60.33 acres more or less.

**B-26 St. George Armory/land parcel**

A part of Sections 16-17, 20-2, Township 43 South, Range 15 West, Salt Lake Base & Meridian, U.S. Survey:

Beginning at a point, said point being North 88° 37' 49" West for a distance of 0.62 feet and North 1° 14' 19" East for a distance of 0.35 feet from the Southeast Corner of 17 or POINT OF BEGINNING; and running thence South 88° 38' 53" East, a distance of 1010.35 feet; thence South 0° 7' 5" East, a distance of 1341.18 feet; thence North 89° 52' 54" East, a distance of 345.37 feet; thence South 0° 7' 5" East, a distance of 1307.37 feet; thence North 88° 52' 23" West, a distance of 545.34 feet; thence North 88° 43' 42" West, a distance of 200.38 feet; thence North 88° 43' 20" West, a distance of 672.59 feet; thence North 1° 14' 18" East, a distance of 2507.10 feet; thence North 1° 14' 19" East, a distance of 135.02 feet to the POINT OF BEGINNING.

Contains 73.49 acres more or less.

**B-27 Blanding Armory**

A part of Section 10, Township 37 South, Range 22 East, Salt Lake Base & Meridian, U.S. Survey:

Beginning at a point, said point being North 1° 10' 37" West for a distance of 1391.05 feet and North 88° 34' 34" East for a distance of 4.63 feet from the Southern 1/16<sup>th</sup> Corner of the Southeast Quarter of the Southeast Quarter of Section 10 or POINT OF BEGINNING; and running thence North 1° 25' 28" West, a distance of 459.03 feet; thence North 88° 48' 2" East, a distance of 591.59 feet; thence South 1° 12' 0" East, a distance of 189.64 feet; thence South 1° 11' 51" East, a distance of 267.04 feet; thence South 88° 34' 22" West, a distance of 589.79 feet to the POINT OF BEGINNING.

Containing 6.21 acres more or less.

